



Replace Underperforming Valtek Actuators - Size 25 & 50



Benefits of Electraulic Actuation™

Higher accuracy and resolution

Improve speed control

Hydraulic performance without oil maintenance

Sealed positive pressure system no filters or vents

Increase reliability and safety for critical steam turbine applic

Improve uptime, throughput and yield

5-year **warranty** available



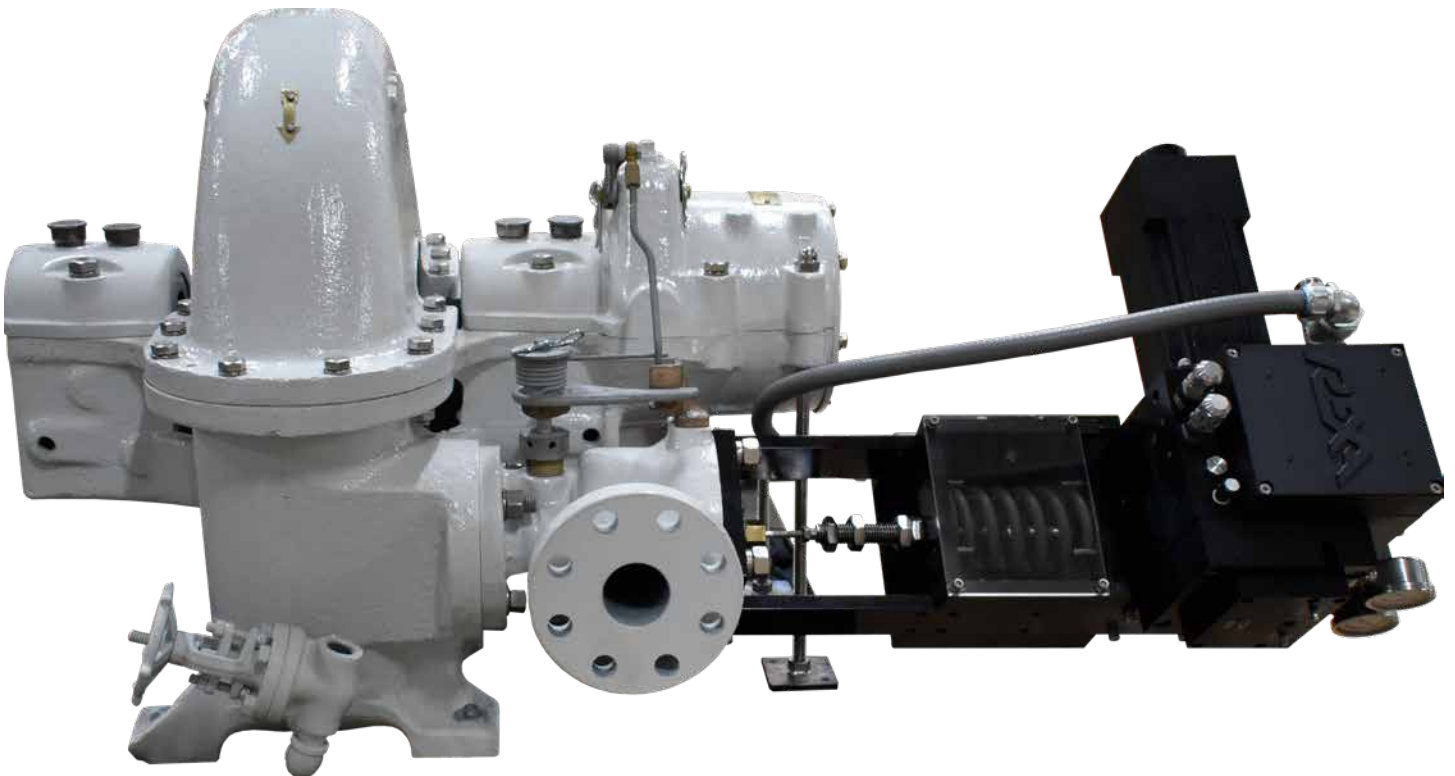
ELECTRAULIC ACTUATION™

Capabilities

Travel 0.5" to 2" stroke (12 mm to 50 mm)
Spring fail safe trip speeds extend to 300ms
Hydraulic thrust to 2800 lbf (12,450 N)
Control thrust speed to 500ms full stroke
Minimal power usage, 120VAC/24VDC power

Drop-In Replacement

Initial consultation to evaluate existing system
Site visit to gather technical information and measurements
Actuator sizing and quotation
Actuator mounting design and fabrication
Mechanical and electrical integration and calibration
On-site training of REXA product



REXA, Inc. • 4 Manley Street • W. Bridgewater, MA 02379, USA

T: +1 508.584.1199 • www.rexa.com